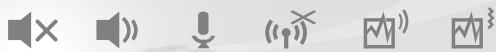


Portable Wireless Signal Detector

HS-007 Plus

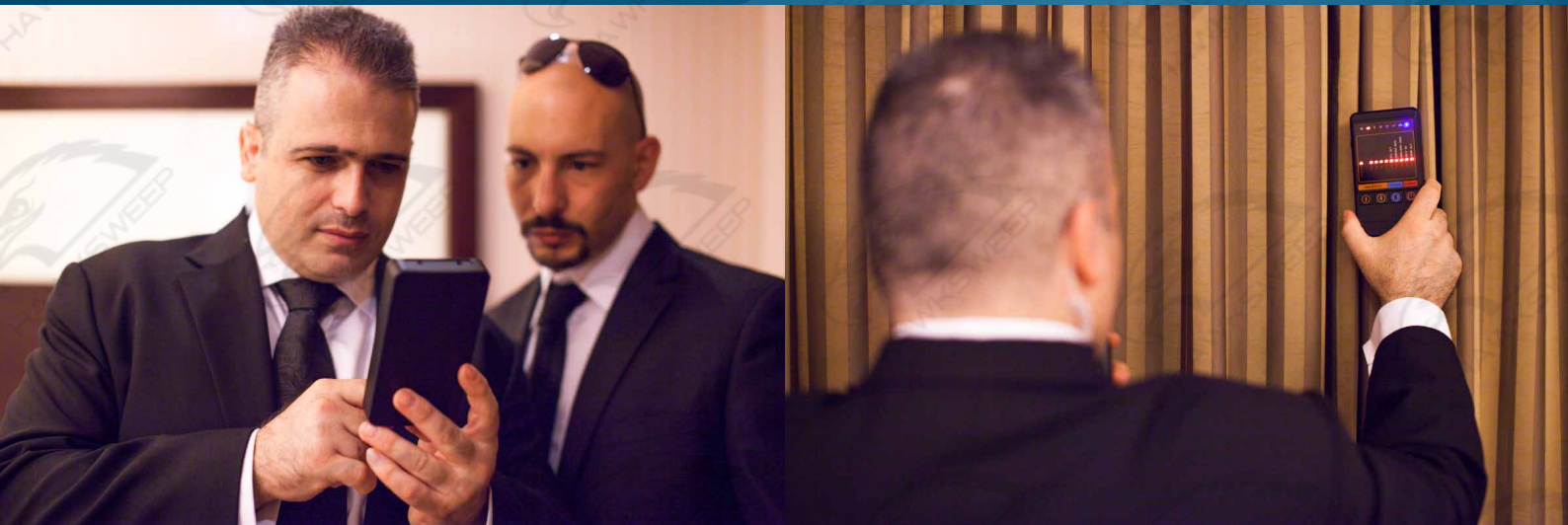


Expose wireless tapping and
eavesdropping devices,
Securing the wireless world.



As the technology of wireless tapping technology develops, the performance of wireless RF signal detector is also being promoted. Wireless tapping device become increasingly difficult to be detected due to their small size, low emitting power, complicated modulation, wide range, high speed, remote controllability and conceal ability. Wireless RF Signal Detector is to send the audio or video signal through electromagnetic waves. It is designed to detect and locate the position of the hidden wireless tapping device.

HS-007 Plus is a combiner of precision, handheld wireless sniffer .It is used to detect the RF signals and concisely determine the location of the working tapping device in the targeted venue.Its simple pushbutton operation and ultra bright LED screen make more it easy to use both for the trained and untrained personnel.



HS-007 Plus Basics



1. Power ON/OFF
2. Selectable Mode Button
3. Increase sensitivity
4. Decrease sensitivity
5. Multifunction Button.
6. Signal strength
7. Cellphone Locker frequency

8. Silent Mode Light
9. Sound Mode Light
10. Acounstic Mode Light
11. Guard Mode Light
12. Vibrate Mode Light
13. Cellphone Locker Light
14. Charging Light

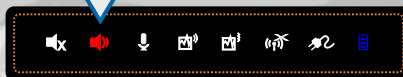
15. Battery Level Light
16. Headset Jack
17. Charging Connector
18. Speaker
19. Battery Case.

Six types of working modes:



Silence Mode

Silent detection for some high sensitivity analogue and digital signals



Sounding Mode

The sounding volume varies from the strength of RF signals level.



Acoustic Mode

Acoustic detection for the analog wireless signal sources. Converting all RF signals into sound. Similar to the sound that can be heard when one mobile phone near the working FM radios.



MODE



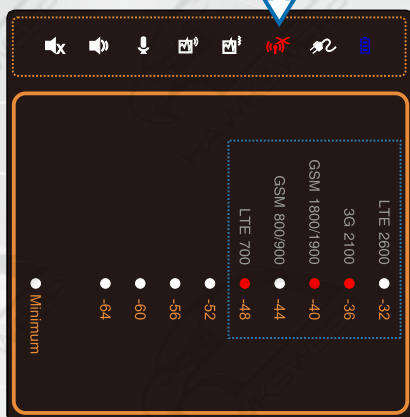
Guard Mode

Ensure the confidence of your conference and allow you to monitor the change of RF signals. It is to alert you to be tapped when some sudden intruders enter into the room and leak the information outside.



Vibration Mode

Special function. Start to Vibrate when any covert tapping signals coming in. This helps you terminate the negotiation of the conference and conduct the wireless tapping device.



Cellphone locking Mode

Monitor the mobile phone signals or other wireless tapping device to make sure business meeting and some private information leaked. Five different frequency bands can be started or closed by one button operation. It is very user-friendly.

Technical Specification:

Detecting Frequency Range: 20-5000MHz

Detecting Sensitivity: -70dBm

Dynamic range: 70 dBm

Sensitivity regulated range: 60db, 1dB

Cellphone Locking range : up to 10M, still determined by local signal strength.

Standby time : More than 40 days.

Detecting Mode working time: 15 hours

Cellphone Locker Mode working time: 3 hours.

Screen display range: 10 db

Display resolution: 1dB

Cellphone Locker frequency bands: GSM 900/CDMA 2100/DCS 1800/4G 800/3G 700/4G 2600

Work Mode: 6 types of Modes

Size: 138*74* 23mm

Device weight: 154g



Advantage and Feature:

- 1.Ultra sensitivity –Detecting some weak signals up to -70dbm (named as weak signals).
- 2.Ultra wide frequency range response and detecting regulation range (60db is equal to be 1 milliton times), as well as high precision regulation with 60 levels. to meet different environments.
- 3.Handheld compact communication terminal mode case design. Humanized design concept on the selection of the function buttons and lights. Fashionable and good looking. Easy to operate and carry.
- 4.Variety of detecting modes are available to differrent confidential conference application.
- 5.Detecting mode selection including the cellphone lockers function, inside designed with different frequency bands It allows to operate simultaneously or separately interfere the global mobile phone network.
- 6.Built-in with lithium battery, Ultra long stand-by design.
- 7.With two charging status display, easy to differentiate.
- 8.Battery Level Indication. With three status: Full charged, Half power, Low battery warning. Easy to use.
- 9.Built-in speaker. Headphone design easier for your detection even in a covert or noisy environment.

Recharging : Red lights is on.Full charged : Blue light is on.



60-100% power : Blue light, 20-60% power : Red light
Under 20% Power : Red and Blue light flashing to alarm.

Multi function Button:
Up Position / Down Position: Selectable Mode
Middle Position: Cancel

Use HS-007 Plus to:

- 1.Keep secret in business negotiations and contract signed;
- 2.Check if there is wireless cameras in the restaurants, hotels , public toilets, swimming pools , dressing room, etc;
- 3.Protect Military or government buildings' confidentiality ;
- 4.Avoid being photographed in companies, factories , cinemas or art galleries to prevent head shot ;
- 5.To protect personal privacy in the private spaces (Such as home).

Complete set:

Device, Battery, AC adapter, Headset volume adjustable.

